



OFFICIAL GUIDE  
FISHING IN  
HOLYROOD PARK



## Where are you allowed to fish?

Duddingston Loch is located in the south-east corner of Holyrood Park. The loch can be accessed from the car park at Duddingston Lodge next to Duddingston Village.

- ✓ You may fish from the north shore of the loch for perch, roach and carp. Signs on the shore of the loch indicate the area where fishing is permitted.
- ✓ Fishing must take place from the shore only.
- ✗ Wading into the loch or sailing on the loch is prohibited.
- ✗ Anglers are advised not to climb on Hangman's Rock as this can be hazardous.

## What types of fishing are allowed?

- ✓ Only conventional rod and line angling is permitted.
- ✓ Barbless hooks are recommended.
- ✓ Bait fishing with maggot or worm is the most popular.
- ✗ No fixed lines (i.e. lines attached to the shore) may be used.
- ✗ Lead shot weights and multiple hooks are prohibited.

Please report anyone using fixed lines, lead weight and multiple hooks or evidence of their use to the Ranger Service.



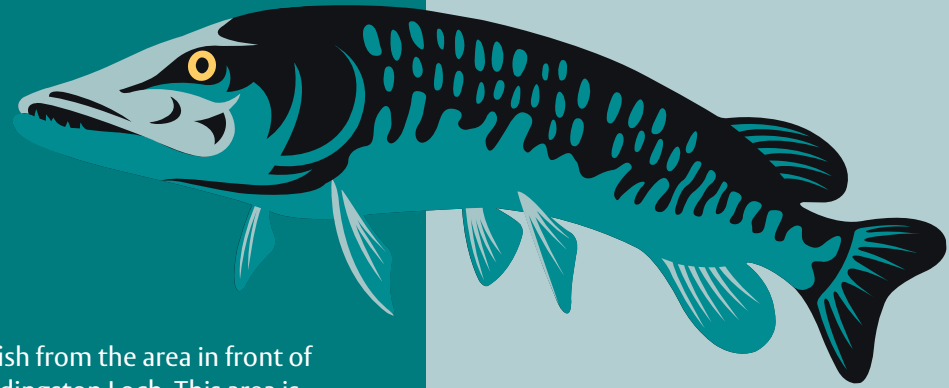
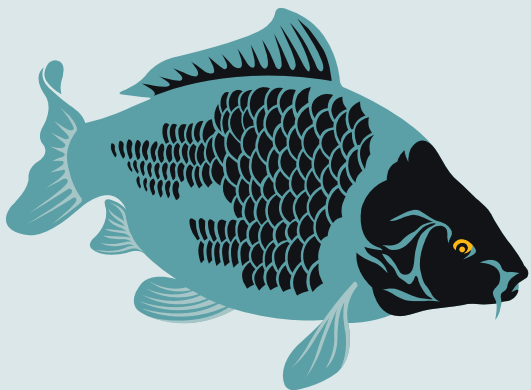
# FISHING IN HOLYROOD PARK

We are pleased to welcome anglers in designated areas of Holyrood Park. However, as this is a Site of Special Scientific Interest (SSSI) and a Scheduled Ancient Monument (SAM), we have regulations in place to protect the park, its wildlife and the interests of all visitors.

**This leaflet details the regulations which must be followed when fishing.**

## Permits and regulations

Fishing is only permitted on the north shore of Duddingston Loch. To fish here you must first obtain a free permit from the Holyrood Park Ranger Service. You will find our contact details on the back page of this leaflet.



## Disabled anglers

Disabled anglers may fish from the area in front of the boathouse on Duddingston Loch. This area is specifically for disabled anglers and those assisting them and should not be used by other anglers.

## Fishing with children

Children (under the age of 18) must be supervised by an adult at all times.

**Duddingston Loch:** Both children and adults are permitted to fish at any time of year.

**Dunsapie Loch:** Adults are not permitted to fish at Dunsapie Loch, however children may fish between 1 May and 30 September.

**St Margaret's Loch:** No fishing permitted at any time.

## Fishing permits

Please ensure that you have your permit with you at all times whilst fishing.

The rangers monitor fishing within the park and will ask to see your permit. Children require their own permit to fish.

All permits are free of charge.



## Protecting Duddingston Loch

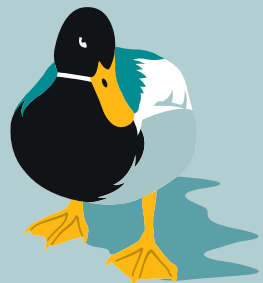
Duddingston Loch is the only remaining natural freshwater loch within Edinburgh. It covers an area of about 20 football pitches with an average depth of 2.2m.

The loch is a designated Bird Sanctuary and Site of Special Scientific Interest (SSSI) due to the species that live in and around it. It is also important geologically and archaeologically.

Historic Scotland cares for the loch and Holyrood Park as a whole in order to protect the archaeology, geology and wildlife to ensure that it can be enjoyed by all users now and in the future.

**For the safety of wildlife on the loch please ensure that you remove all lines and hooks and dispose of them carefully. Please remove all rubbish.**

Re-stocking or the introduction of new fish species is prohibited. The same rules apply to plant and animal life across the park.





## DON'T FORGET

- ✓ You may only fish within designated areas.
- ✓ You must have a permit before fishing.
- ✓ Fishing should be undertaken by rod and reel only. (Children may use hand nets in Dunsapie Loch)
- ✓ All fish caught must be released unharmed to the water.
- ✗ Lead shot weights and multiple hooks are prohibited.
- ✗ Camping and fires are not permitted in the park.

Thank you for abiding by these rules and helping us to conserve the park and loch. We hope you enjoy fishing here.

Contact the Ranger Service for a permit to fish, or if you have any queries, concerns or comments in relation to your own or other's fishing.



### Contact us:

Holyrood Park Education Centre  
1 Queen's Drive, Holyrood Park Edinburgh EH8 8HG

T 0131 652 8150

E [rangers@hes.scot](mailto:rangers@hes.scot)

[www.historicenvironment.scot/learn/ranger-service](http://www.historicenvironment.scot/learn/ranger-service)