

# Seton Collegiate Church

## Explorer Quiz

Explore our church with this fun, fact-finding mission.  
Remember to ask a steward if you need any help.



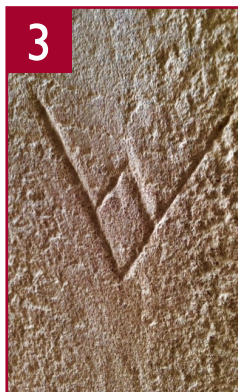
1

Look up at the high wall in the Priests' House. How many floors did it once have?



2

These stone shelves or plinths once supported statues. How many shelves can you count?



3

The men who built the church made marks on the stones. What would your mark look like?



4

Can you find this strange carving? Whose name is on the stone?



5

There is something wrong with the bell - can you see what?



6

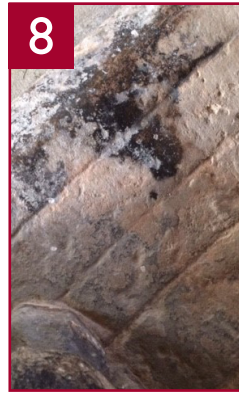
Lots of dates are carved in the church. What are the earliest and latest dates you can find?





7

Whereabouts can you find these buckles carved out of stone?



8

Can you see this sword carved in the stone? Where is it?



9

This face seems to have been carved sideways. Can you find it?



10

Find fire-breathing dragons on the garden wall. Which other creatures can you see?



11

Most windows in the church are arched, but two are square or oblong. Where are they?



12

What might you find in this corner?

Need a clue? 1. Look for lines of holes in the walls. They held the beams which supported floors and ceilings; 2. Not all the buttresses had statues! 3. Look on the archways as you go in. Once you've seen them there, you'll notice them everywhere! 4. Eyes down! Look at the floor; 5. Look at the back of the bell. 6. Eyes down again! But don't forget to check the monuments on the walls too. 7. Look carefully at the front of the church. 8. Seek out a step. 9. Look on the outside of the church, at the bottom of the roof. 10. There are some on the garden wall, and others high up on the outside of the church. Look up, under the gutters! 11. You can see them from the outside, but you might need to go back inside to see which room they are in. 12. No clues here!

